

Features

- Outline dimension: PCB: 38mm×29.8mm×33.6mm
- 1A (SPDM) , GAP>3.0mm
- IEC61810, IEC60664, RoHS, REACH SvHC compliance
- Epoxy resin seal , Environmental protection category RTII
- 20A 85°C carrying capacity
- PCB mounting type

Application

EV
Precharge circuit control of inverter
Industrial DC control unit
AGV

Coil data

Rated voltage (VDC)	Rated power (W)	Rated current (mA)	Coil resistance ($\Omega \pm 10\%$)	Operate voltage (VDC)	Release voltage (VDC)
9	2	220	42.5	≤ 6.75	≥ 0.45
12	2	160	76	≤ 9	≥ 0.6
18	2	110	170	≤ 13.5	≥ 0.9
24	2	80	303	≤ 18	≥ 1.2
36	2	55	682	≤ 27	≥ 1.8
48	2	40	1212	≤ 36	≥ 2.4
60	2	33	1894	≤ 45	≥ 3.0
110	2	18	6368	≤ 82.5	≥ 5.5

Notes: The above values are the initial at 23°C.



File NO. E329801



File NO. R 50649888 0001



File NO. CQC24002447074

Contact parameters

Contact form	1A (SPDM)
Contact material	AnSnO ₂
Initial voltage drop	≤ 100 mV at 20 A
Rated current (Resistive Load)	10A (@1mm ² PCB)
Rated switching voltage	800 Vd.c.
Minimum applicable load	48Vd.c., 100mA
Max switching voltage	800 Vd.c.
Rated switching current	Making 10A, Breaking 1A (800Vd.c.)
Electrical life (Resistive Load)	6,000 OPS (400 Vd.c. 20 A) 6,000 OPS (800 Vd.c. 5 A) 50000 OPS (800 Vd.c. Making 10A/0.7s - Breaking 1A/0.3s)
Current tolerance	20A, continuous
	30A, 1.0 h
	40A, 20 min
	80A, 30 s
	120A, 10 s
	200A, 0.6 s
Mechanical life	200,000 cycles, ON:OFF: 0.2s: 0.2s

Notes: Unless otherwise indicated, Electrical life at 23°C, ON: OFF=1s: 9s. During the test, the coil was not connected to the surge suppression device. If the coil parallel diode is used, the release time of the relay will be lengthened and the service life will be reduced.

Other parameters

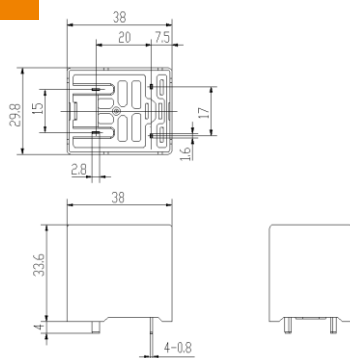
Dielectric strength	Between open contacts	2500 V.a.c. 50/60 Hz 1 min
	Between coil to contacts	3500 V.a.c. 50/60 Hz 1 min
Insulation resistance		100 M Ω at 1000 Vd.c.
Operate time (at rated voltage)		≤ 25 ms
Release time (at rated voltage)		≤ 10 ms
Vibration resistance	Destruction	10Hz~ 500Hz., 49m/s ²
	Functional	10Hz~ 500Hz., 49m/s ²
Shock resistance	Destruction	490m/s ²
	Functional	ON: 196m/s ² OFF: 98m/s ²
Ambient temperature		-40°C~85°C (No dew, No ice)
Relative humidity		5% RH ~85% RH
Terminal style		PCB terminal
Installation		PCB terminal
Environmental protection category		RTII
Weight		PCB: 65g
Overall dimensions		38mm×29.8mm×33.6mm

Notes: The above values are conservative at 23°C.

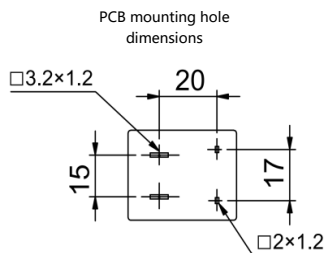
Selection of reference

	CHDR2	-1	12	DW	10	,XXX
1.Product code						
CHDR2 series						
2.Contact form						
1=1 Form A(SPDM)						
3.Coil rated voltage						
09: 9VDC 12: 12VDC 18: 18VDC 24:m 24VDC 36: 36VDC 48: 48VDC						
60: 60VDC 80: 80VDC 110: 110VDC						
4.Rated switching voltage						
DW = 800VDC max						
5.Rated switching current						
10 =10A						
6.Additional numbers and /or letters						
000-999, aaa-zzz or blank, which does not represent electrical changes, only for specific customer requirements						

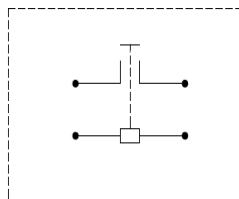
Outline dimension



Mounting hole dimensions and wiring diagram



Wiring diagram



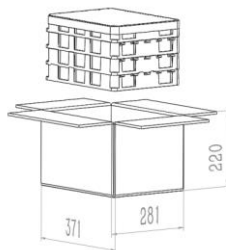
Notes: No dimensional tolerance noted:
size $\leq 10\text{mm}$; tolerance : $\pm 0.2\text{mm}$;
size $10 \sim 50\text{mm}$; tolerance : $\pm 0.3\text{mm}$;
size $> 50\text{mm}$ 时; tolerance : $\pm 0.4\text{mm}$.

备注:

1. Please avoid sticking grease and other foreign bodies on the lead end, PCB terminal use above 2.5mm² connecting wires. Otherwise, it may cause abnormal fever at the end of the derivation.
2. PCB Terminal welding temperature and time are recommended not to exceed 260°C/10S. In the case of overrange, damage may result.

Packaging figure

Each plastic box 25PCS ,
Per carton 100PCS.



Statement:

This information is for customer reference only. Churod has tried its best to ensure the accuracy of the information. However, errors are unavoidable and the specifications and parameters of the product may change due to the improvement of the product.

About application, Churod cannot assess relay for each specific application in the field of all performance parameters of the requirements, so customer should according to the specific conditions of use choose matching products, which did not make clear a regulation requirement, please contact Churod in order to get more technical support, Churod clear statement to this data information is only for reference, and the customer is responsible for the product to choose.